

DINE + DÉCOR EXPO

SOUTH BUILDING · LEVEL 3 · HALLS A1 AND A2

Cook + Bakeware

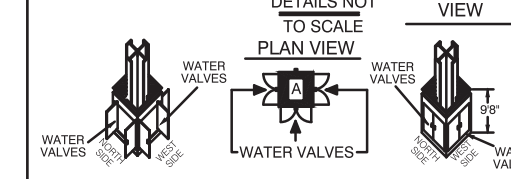
- Bakeware
- Cookware

Tabletop, Kitchen Essentials + Accents

- Giftware + Home Décor
- Home Textiles
- Kitchen Tools + Accessories
- Tabletop

INDIVIDUAL COLUMN DETAILS

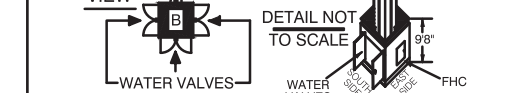
COLUMN TYPE A



DETAILS NOT TO SCALE
ISOMETRIC VIEW
PLAN VIEW

COLUMN W/ FIRE HOSE CABINET
ALL DOORS OPEN 42"
EAST SIDE - (LIMITED ACCESS)
NORTH, SOUTH & WEST SIDES -
WATER VALVES (LIMITED ACCESS)
FIRE STROBE SITS ON TOP OF EACH SIDE OF COLUMN BASE (96" HIGH FROM THE FLOOR)

COLUMN TYPE B



DETAILS NOT TO SCALE
ISOMETRIC VIEW
PLAN VIEW

COLUMN W/ FIRE HOSE CABINET (FHC)
ALL DOORS OPEN 42"
EAST SIDE - FHC (TOTAL ACCESS)
NORTH, SOUTH & WEST SIDES -
WATER VALVES (LIMITED ACCESS)
FIRE STROBE SITS ON TOP OF EACH SIDE OF COLUMN BASE (96" HIGH FROM THE FLOOR)

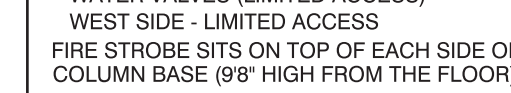
COLUMN TYPE C



DETAILS NOT TO SCALE
ISOMETRIC VIEW
PLAN VIEW

SPLIT COLUMN W/ FIRE HOSE CABINET
ALL DOORS OPEN 42"
NORTH SECTION
EAST SIDE - (LIMITED ACCESS)
WEST & NORTH SIDE -
WATER VALVES (LIMITED ACCESS)

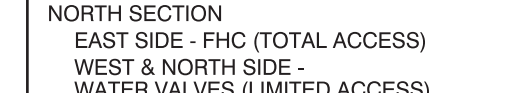
COLUMN TYPE D



DETAILS NOT TO SCALE
ISOMETRIC VIEW
PLAN VIEW

SPLIT COLUMN W/ FIRE HOSE CABINET (FHC)
ALL DOORS OPEN 42"
NORTH SECTION
EAST SIDE - FHC (TOTAL ACCESS)
WEST & NORTH SIDE -
WATER VALVES (LIMITED ACCESS)

COLUMN TYPE E



DETAILS NOT TO SCALE
ISOMETRIC VIEW
PLAN VIEW

SPLIT COLUMN W/ FIRE HOSE CABINET (FHC)
ALL DOORS OPEN 42"
NORTH SECTION
EAST & SOUTH SIDE -
WATER VALVES (LIMITED ACCESS)
WEST & NORTH SIDE -
WATER VALVES (LIMITED ACCESS)

COLUMN TYPE F



DETAILS NOT TO SCALE
ISOMETRIC VIEW
PLAN VIEW

SPLIT COLUMN W/ FIRE HOSE CABINET (FHC)
ALL DOORS OPEN 42"
NORTH SECTION
EAST & SOUTH SIDE -
WATER VALVES (LIMITED ACCESS)
WEST & NORTH SIDE -
WATER VALVES (LIMITED ACCESS)

FLOOR PORTS LEGEND

MECHANICAL FLOOR PORTS EVERY 30' ON CENTER

- 4" DRAIN FLUSH W/ FLOOR
- 1" DOMESTIC WATER 60 PSI (35 GAL. PER MIN.)
- 1" COMPRESSED AIR 100PSI (180 CU. FT. PER MIN.)
- 1" NATURAL GAS 1 PSI (27" W.C.)

ELECTRICAL FLOOR PORTS EVERY 15'X30' ON CENTER

- TYPE A
120V, SINGLE, 15 AMP
208V, THREE, 30 AMP
480V, THREE, 100 AMP
- TYPE B
120V, SINGLE, 15 AMP
208V, THREE, 30 AMP
208V, THREE, 60 AMP
- TYPE C
120V, SINGLE, 15 AMP
208V, THREE, 30 AMP

Doorway Access

- Shaded areas indicate column doors must be easily accessible. Backwall must have removable panel or access door

Fire Prevention Fixtures

- FHC Fire Hose Cabinet
 - FEX Fire Extinguisher
 - FHR Fire Hose Rack
- All fire prevention fixtures must be visible and accessible at all times.

Corner Booths

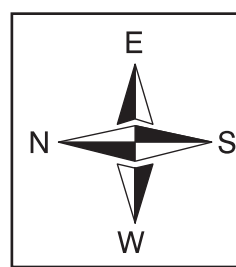
- Dark shaded areas indicate corner booth (\$400 additional charge per corner)
- Limited quantities available.

Additional corners may be added at a later date and are subject to a \$400 charge per corner.

Pre-drawn island booths are charged an additional \$1,600 (\$400 per corner X four corners).

Pre-drawn peninsula booths are charged an additional \$800 (\$400 per corner X two corners.)

Pre-drawn inline booths are charged an additional \$400 per each corner.



THE INSPIRED HOME SHOW

IAH's GLOBAL HOME + HOUSEWARES MARKET

march 13 - 16, 2021 · chicago · TheInspiredHomeShow.com